



# POWER BI DATA CONNECTOR TUTORIAL

|                  |                                   |
|------------------|-----------------------------------|
| Last Revision:   | March 19, 2020                    |
| Version:         | 1.0.1                             |
| Supported files: | CSV, TXT, XLS, TAB,<br>HTML, JSON |

# TABLE OF CONTENTS

## Contents

|                                       |   |
|---------------------------------------|---|
| Overview .....                        | 2 |
| Tutorial .....                        | 2 |
| Download Extension .....              | 2 |
| Start Power BI Desktop .....          | 2 |
| Adjust Settings (First Time Use)..... | 3 |
| Connect to the Data Connector.....    | 3 |
| Enter GUID .....                      | 5 |
| Log In .....                          | 6 |
| Load the Data .....                   | 6 |
| Troubleshooting.....                  | 7 |
| Revisions .....                       | 9 |

## OVERVIEW

Power BI is a business analytics software that includes services, apps, and connectors that work together to turn various sources of data into coherent and visually immersive insights. It provides a simple interface to prepare and analyze data, build interactive visualizations and create custom dashboards and reports.

Terbine provides a Power BI Data Connector tool to supply data sets found in the Terbine.io system directly to Power BI. This tool provides data that needs little to no manipulation to simplify the process of retrieving a data source in order to create visualizations. To utilize, follow these steps:

## TUTORIAL

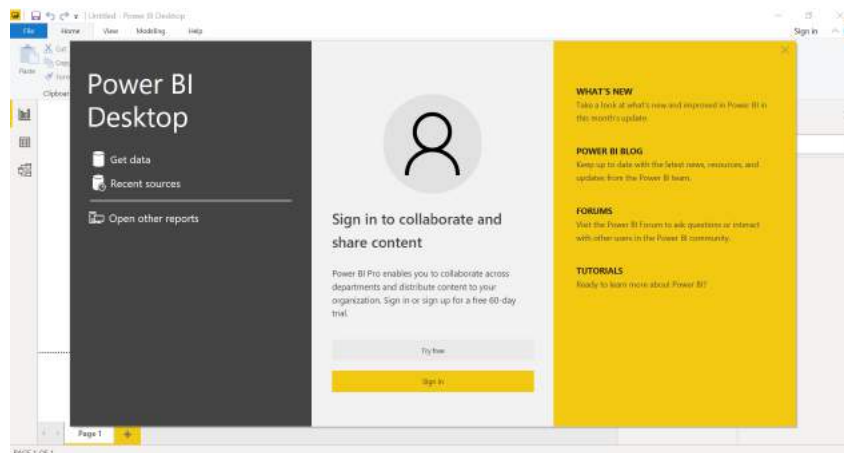
### 1. DOWNLOAD EXTENSION

Download the Terbine.mez extension file. Create a **[Documents]/Power BI/Custom Connectors** directory and place the file in the Custom Connector folders.

### 2. START POWER BI DESKTOP

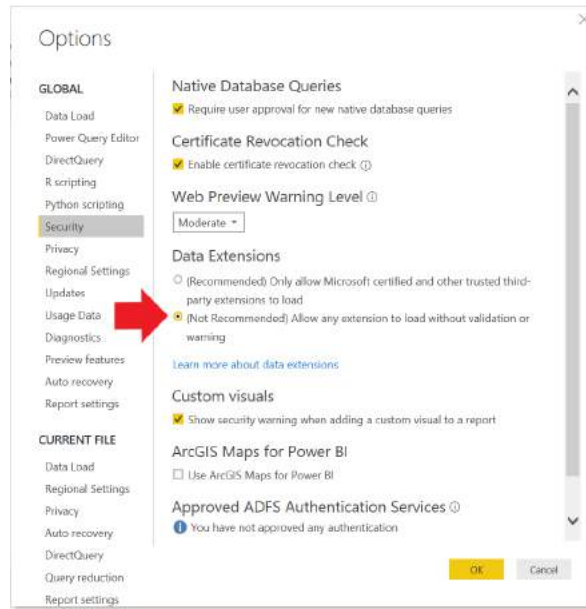
To download, PowerBI is available at no cost in the Microsoft Store. You can use the following link to the Microsoft Power BI Desktop page to navigate to the store by clicking the **Download Free** button:

- [Power BI Desktop--Interactive Reports | Microsoft Power BI](#)



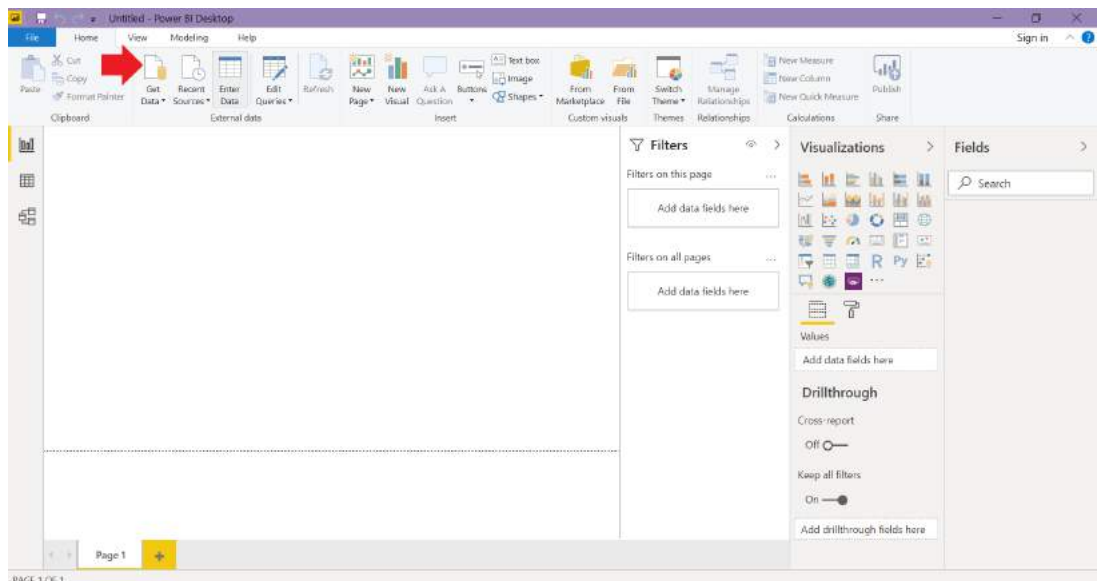
### 3. ADJUST SETTINGS (FIRST TIME USE)

If this is your first time using a custom connector, exit out of Power BI's Start Menu and navigate to the settings by selecting **File > Options and settings > Options > Security**. Under Data Extensions, select **(Not Recommended) Allow any extension to load without warning** to enable use of custom connectors.

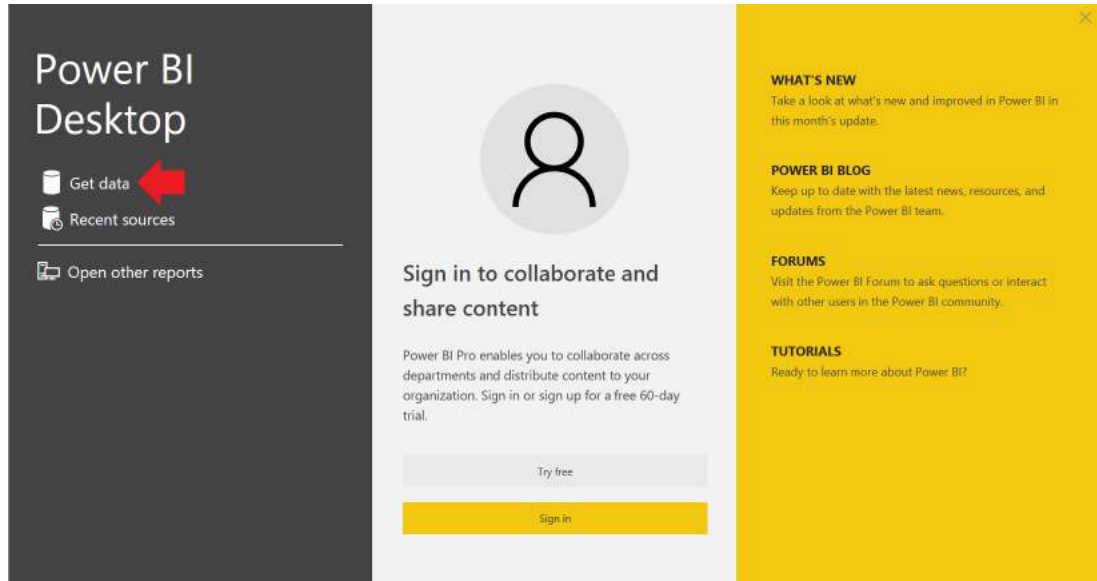


### 4. CONNECT TO THE DATA CONNECTOR

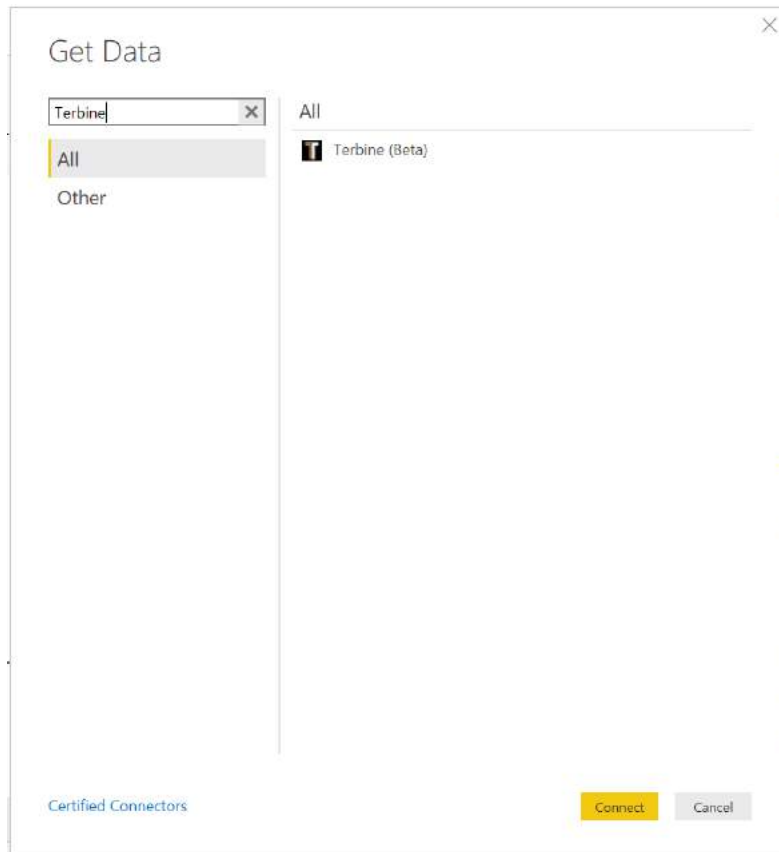
To reach the connector, begin by clicking the **Get Data** option located in the top menu or from Power BI's Start Menu by clicking on the **Get data** option located on the left hand side of the menu.



## Power BI Data Connector Tutorial



A pop-up window will open with Data Connector Options. Scroll through the list or type “Terbine” in the search box and choose the Terbine Connector. Click the **Connect** button.

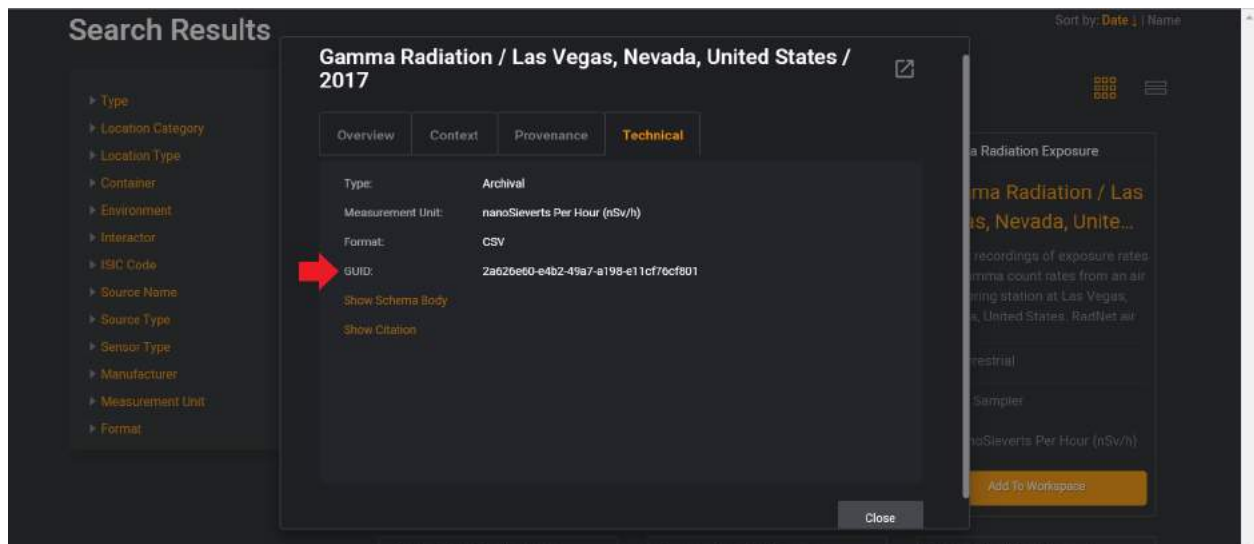


## 5. ENTER GUID

The connector will prompt you to enter the GUID of the data you would like to retrieve from Terbine's system.



A GUID is a unique identifier for a metadata instance found on [Terbine.io](https://terbine.io). To get a GUID, navigate to the Terbine.io site and search for a data set you would like to retrieve. Once chosen, click on the name in the tile to show a pop up window containing the metadata for that instance. The **GUID** can be found in the Technical Tab. The **file format** is also viewable from this tab (refer to the beginning of the tutorial to see which file types are supported). Copy and paste the GUID into the Data Connector text box, click **OK**.



**6. LOG IN**

Log in to the Data Connector using the email address and password associated with your Terbine account and click on **Connect**.

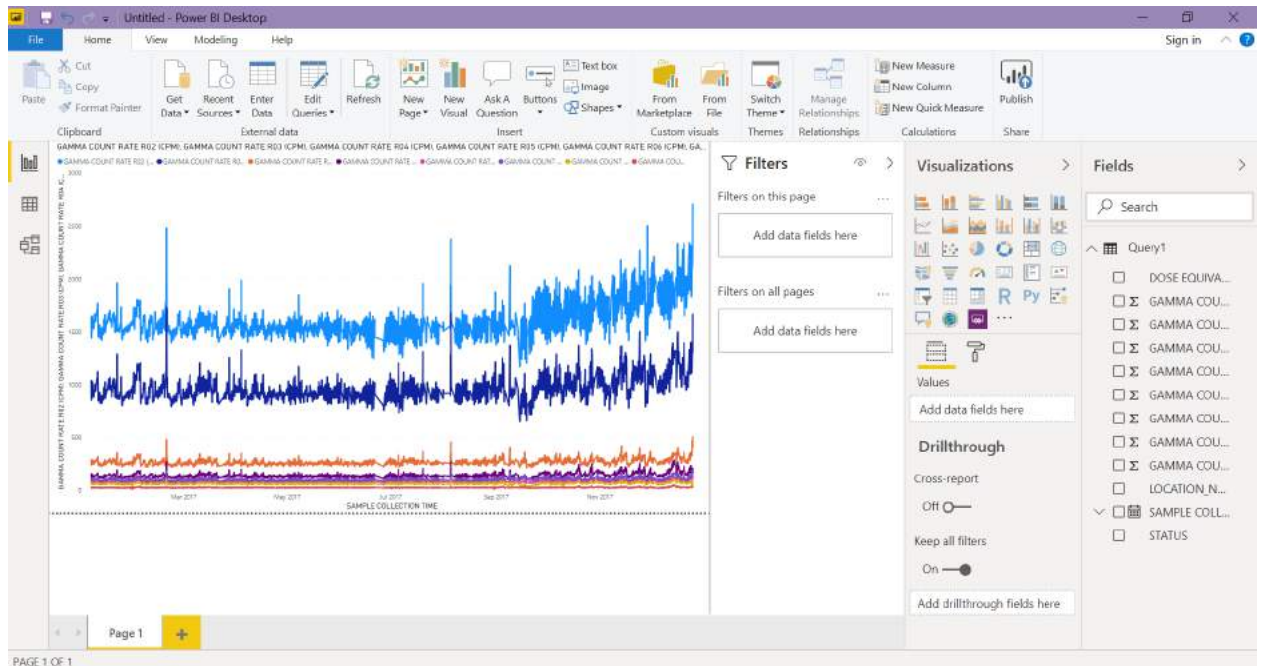
**7. LOAD THE DATA**

Once you submit the GUID and login information, a window will open that previews the data. You will now have the option to **Load** the data to use it as it or to **Transform Data** to make any adjustments.

| LOCATION_NAME | SAMPLE COLLECTION TIME | DOSE EQUIVALENT RATE (nSv/h) | GAMMA COUNT RATE R02 (CPM) | GAMMA COUNT RATE R03 (CPM) |
|---------------|------------------------|------------------------------|----------------------------|----------------------------|
| NV: LAS VEGAS | 1/5/2017 4:41:00 PM    |                              | 1603                       |                            |
| NV: LAS VEGAS | 1/5/2017 5:41:00 PM    |                              | 1638                       |                            |
| NV: LAS VEGAS | 1/5/2017 6:41:00 PM    |                              | 1523                       |                            |
| NV: LAS VEGAS | 1/5/2017 7:42:00 PM    |                              | 1451                       |                            |
| NV: LAS VEGAS | 1/5/2017 8:42:00 PM    |                              | 1442                       |                            |
| NV: LAS VEGAS | 1/5/2017 9:42:00 PM    |                              | 1497                       |                            |
| NV: LAS VEGAS | 1/5/2017 10:42:00 PM   |                              | 1502                       |                            |
| NV: LAS VEGAS | 1/5/2017 11:42:00 PM   |                              | 1497                       |                            |
| NV: LAS VEGAS | 1/6/2017 12:43:00 AM   |                              | 1498                       |                            |
| NV: LAS VEGAS | 1/6/2017 1:43:00 AM    |                              | 1507                       |                            |
| NV: LAS VEGAS | 1/6/2017 2:43:00 AM    |                              | 1499                       |                            |
| NV: LAS VEGAS | 1/6/2017 3:43:00 AM    |                              | 1507                       |                            |
| NV: LAS VEGAS | 1/6/2017 4:43:00 AM    |                              | 1550                       |                            |
| NV: LAS VEGAS | 1/6/2017 5:44:00 AM    |                              | 1637                       |                            |
| NV: LAS VEGAS | 1/6/2017 6:44:00 AM    |                              | 1649                       |                            |
| NV: LAS VEGAS | 1/6/2017 7:44:00 AM    |                              | 1643                       |                            |
| NV: LAS VEGAS | 1/6/2017 8:44:00 AM    |                              | 1615                       |                            |
| NV: LAS VEGAS | 1/6/2017 9:44:00 AM    |                              | 1607                       |                            |
| NV: LAS VEGAS | 1/6/2017 10:45:00 AM   |                              | 1629                       |                            |
| NV: LAS VEGAS | 1/6/2017 11:45:00 AM   |                              | 1629                       |                            |

## Power BI Data Connector Tutorial

After clicking on load, the data set is now ready for visualization.

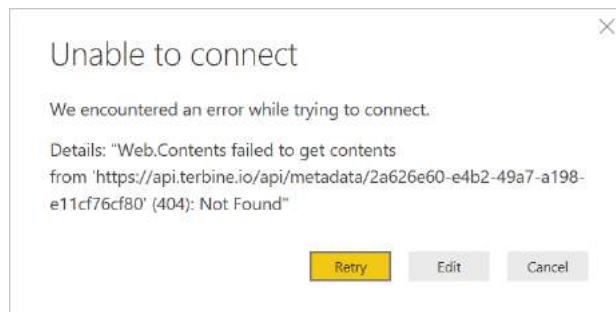


Power BI offers many resources including guided learning, samples and documentation on the [Power BI Learning](#) page to get you started in manipulating data and creating visualizations!

## TROUBLESHOOTING

- **404 Error**

“(404): Not Found” occurs when the resource connected to the GUID entered is not found. Make sure the GUID is correct and not missing any digits.

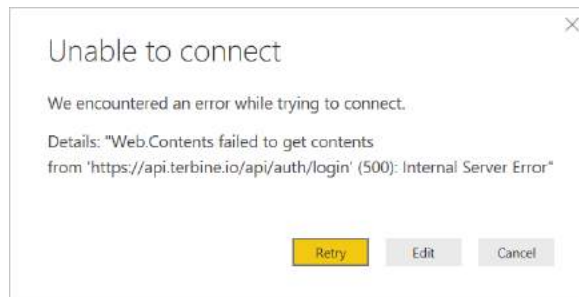


- **500 Error**

(500): Internal Server Error occurs at the server level during authentication. Make sure the Email Address and Password entered match the credentials connected to

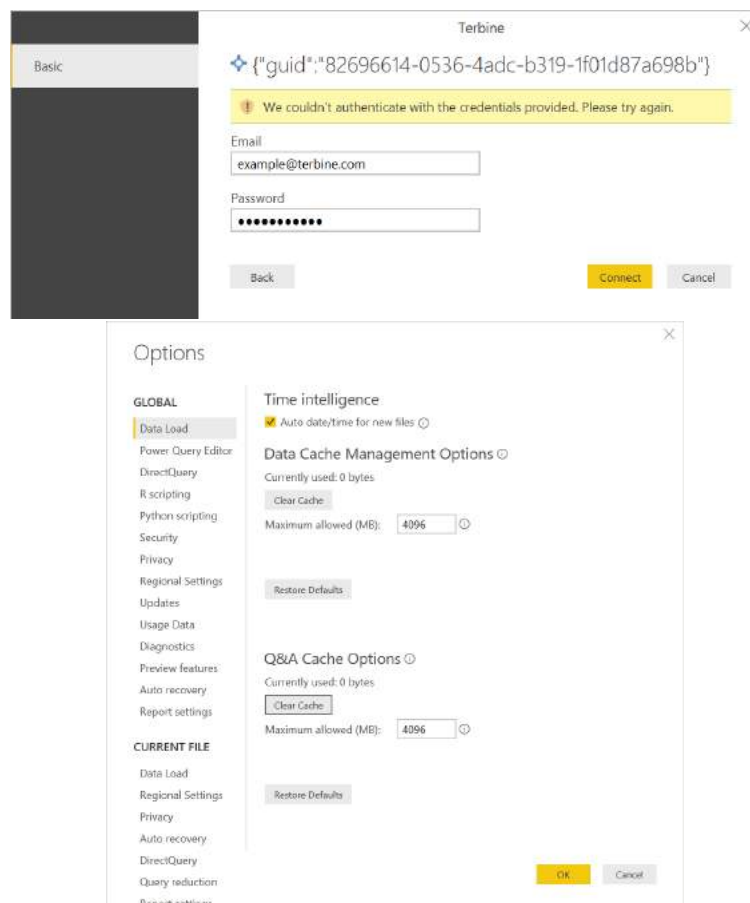


your Terbine.io account. Clear any incorrect credentials in the **Data Source Settings (File > Options and settings > Data source settings)**.



- **Credentials Error**

“We couldn’t authenticate with the credentials provided” occurs when the authentication method has changed due to updating the Terbine.mez file. To fix, clear Power BI’s cache found in the **Data Load settings (File > Options and settings > Options > Data Load)**.



## REVISIONS

| <b>Version</b> | <b>Date</b> | <b>Name</b>   | <b>Description</b> |
|----------------|-------------|---------------|--------------------|
| 1.0.1          | 2020/03/19  | Jenal Sanchez | Initial Release    |